

**Application**

Upholstery

**Content**

Top - 100% Silicone, Inherently Graffiti-Free®  
 \*Middle - 100% Polyurethane (Polycarbonate Based)  
 \*Patented, innovative silicone hybrid transfer prints

**Backing**

100% Polyester

**Width**

53/54"

**Repeat**

App. 14" H, 14" V

**General Characteristics**

Abrasion : 200,000+ double rubs (Wyzenbeek)†  
 Hydrolysis Resistance : 15+ weeks  
 - ISO1419:1995, Method C, Tropical Test  
 Silicone does not support microbiological growth  
 Colorfastness to light (AATCC-16/200 hours)  
 Print Retention (ASTM D3389-10) Grade 5  
 Meets or Exceeds all ACT Heavy Duty Performance  
 Guidelines for Upholstery

**Flammability**

CA Bulletin 117-2013, UFAC/NFPA 260  
 IMO A652 (16) 8.2

**Environmental**

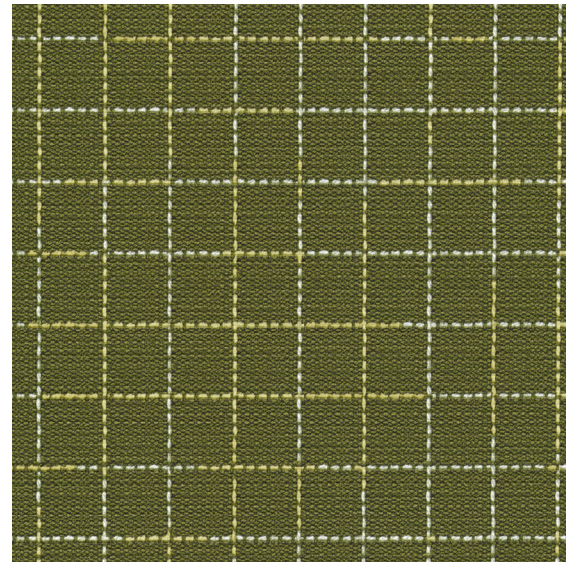
DMF Free, PVC/Phthalates Free, FR/Anti-Microbial Free  
 \*Human/Nature Friendly Silicone Based  
 \*Complies with REACH, Prop 65, HHI, CAL 01350

**Maintenance\***

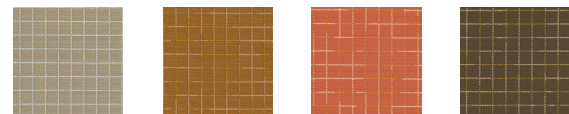
W-Water Based Cleaners, Bleach Cleanable (4:1)

**Warranty**

Please refer to our Terms of Sales for warranty information.



Parrot

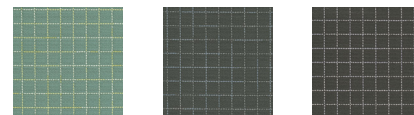


Fleece

Ginger

Tart

Truffle



Tidepool

Marina

Graphite

\* While this product offers excellent protection against ink marks or difficult stains, full removal is not always guaranteed, if stains not addressed promptly.

† Multiple factors affect fabric durability and appearance retention, including end-user application and proper maintenance. Wyzenbeek results above 100,000 double rubs have not been shown to be a reliable indicator of increased fabric lifespan.