

ETCHED PLAID
Product Specifications

Application
Upholstery

Content
100% Polyurethane (Polycarbonate Based)

Finish
Patented, Water Based Graffiti-Free®

Backing
100% Polyester

Width
53/54"

Repeat
App. 13.5" H, 13.5" V

General Characteristics

Abrasion : 100,000+ double rubs (Wyzenbeek)†
Hydrolysis Resistance : 15+ weeks
- ISO1419:1995, Method C, Tropical Test
Colorfastness to Light (AATCC-16/200 hours)
Meets or exceeds all ACT Heavy Duty Performance Guidelines for Upholstery

Flammability

CA Bulletin 117-2013, UFAC/NFPA 260
IMO A652 (16) 8.2

Environmental

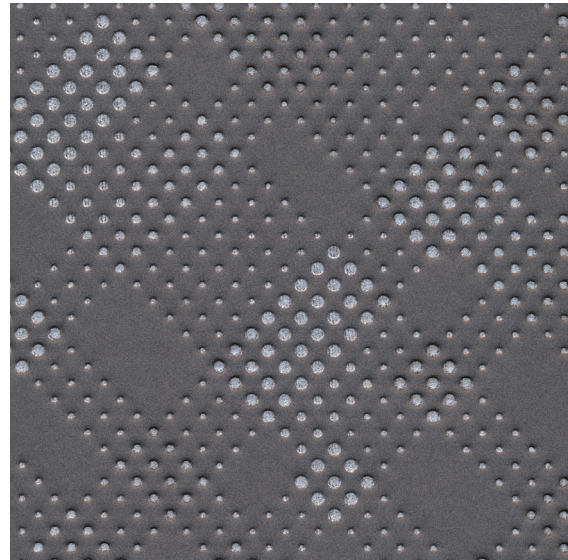
DMF Free, PVC/Phthalates Free, FR/Anti-Microbial Free
*Complies with REACH, Prop 65, HHI, CAL-01350

Maintenance*

W/S, Bleach Cleanable (4:1)

Warranty

Please refer to our Terms of Sales for warranty information.



Charcoal



Dk. espresso



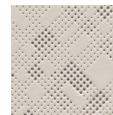
Dusk



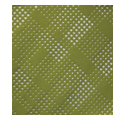
Elk



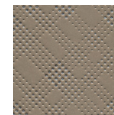
Honeycomb



Linen



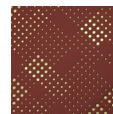
Matcha



Palladium



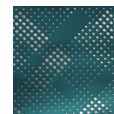
Persimmon



Ruby Red



Sapphire



Sea green

* While this product offers excellent protection against ink marks or difficult stains, full removal is not always guaranteed, if stains not addressed promptly.

† Multiple factors affect fabric durability and appearance retention, including end-user application and proper maintenance. Wyzenbeek results above 100,000 double rubs have not been shown to be a reliable indicator of increased fabric lifespan.