

# NUVTEX® COLONIAL

Product Specifications

Pointe.  
International

## Application

Upholstery

## Content

100% Phthalate Free Vinyl

## Backing

65% Polyester / 35% Cotton

## Width

54"

## Repeat

App. 1"H, 0.8"V

## General Characteristics

Abrasion : 100,000+ Double Rubs (Wyzenbeek)†  
Full leather grip & touch  
Meets or exceeds all ACT Heavy Duty Performance Guidelines for Upholstery

## Flammability

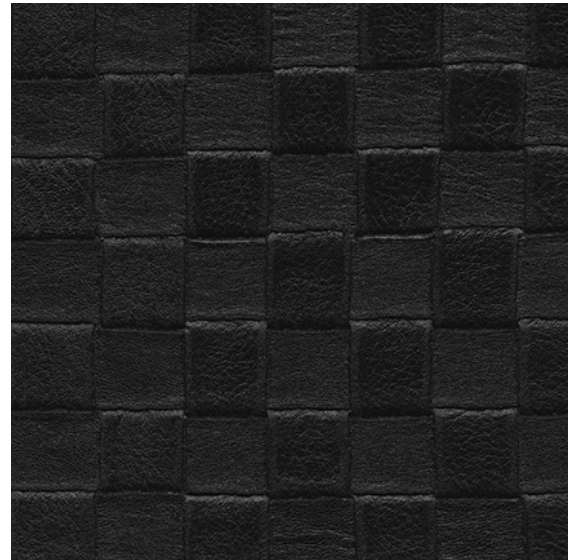
CA Bulletin 117-2013, UFAC/NFPA-260  
IMO A652 (16) 8.2 & 8.3

## Maintenance

W-Water Based Cleaner

## Warranty

Please refer to our Terms of Sales for warranty information.



Black



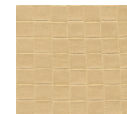
Snow



White



Silver



Sand



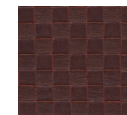
Pyrite



Bronze



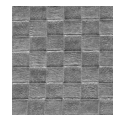
Canyon



Java



Spring



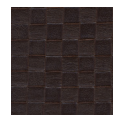
Pewter



Brandy



Chestnut



Cocoa

† Multiple factors affect fabric durability and appearance retention, including end-user application and proper maintenance. Wyzenbeek results above 100,000 double rubs have not been shown to be a reliable indicator of increased fabric lifespan.