

BLACKOUT PURCELL

Product Specifications

Pointe.
International

Application

Stand Alone Blackout Drapery

Contents

100% Polyester
Backed with acrylic latex foam topped with cotton flock

Width

54"

Repeat

N/A

Note

We suggest customer test the product at the window prior to ordering.

Purcell provides thermal insulation and blackout protection.

Flammability

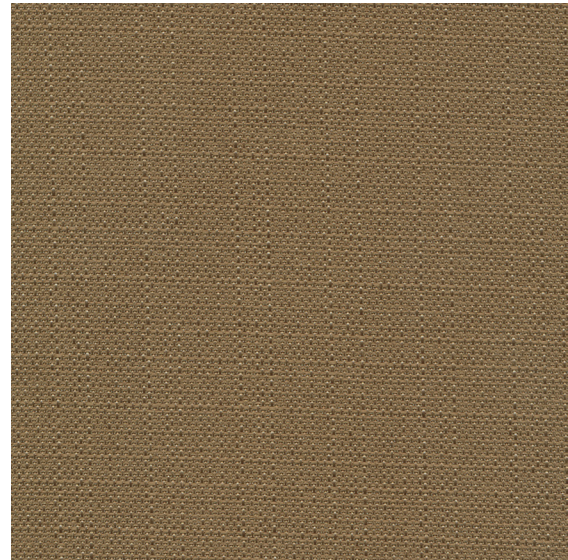
NFPA-701, CAN/ULC-S109-14

Cleaning

W

Warranty

Please refer to our Terms of Sales for warranty information.



Canyon

