

SKINTEX® SWAYED

Product Specifications

Pointe.
International

Application

Upholstery

Content

100% Polyurethane (Polycarbonate Based)

Backing

100% Polyester

Width

54"

Repeat

N/A

General Characteristics

Abrasion : 500,000+ double rubs (Wyzenbeek)†
Hydrolysis Resistance : 15+ weeks
- ISO1419:1995, Method C, Tropical Test
Colorfastness to light (AATCC-16/200 hours)
Meets or exceeds all ACT Heavy Duty Performance
Guidelines for Upholstery

Flammability

CA Bulletin 117-2013, UFAC/NFPA-260
IMO A652 (16) 8.2

Maintenance

W/S, Bleach Cleanable (10:1)

Options

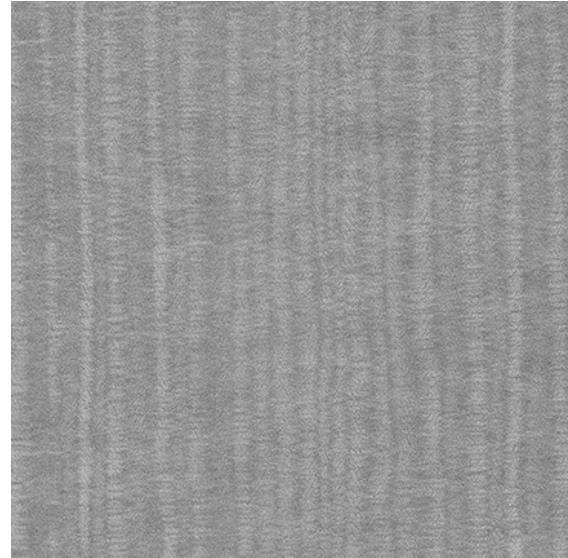
Graffiti-Free®

Environmental

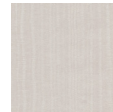
DMF Free, PVC/Phthalates Free, FR/Anti-Microbial Free
*Complies with REACH, Prop 65, HHI, CAL 01350

Warranty

Please refer to our Terms of Sales for warranty
information.



Twilight



Blizzard



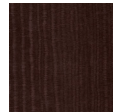
Madeline



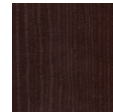
Sunburst



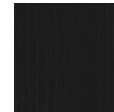
Cloud Mist



Dk Chocolate



Red Velvet



Moonlit Sky

† Multiple factors affect fabric durability and appearance retention, including end-user application and proper maintenance. Wyzenbeek results above 100,000 double rubs have not been shown to be a reliable indicator of increased fabric lifespan.